

# Important Notice

**To: Boaters and Personal Watercraft Users**

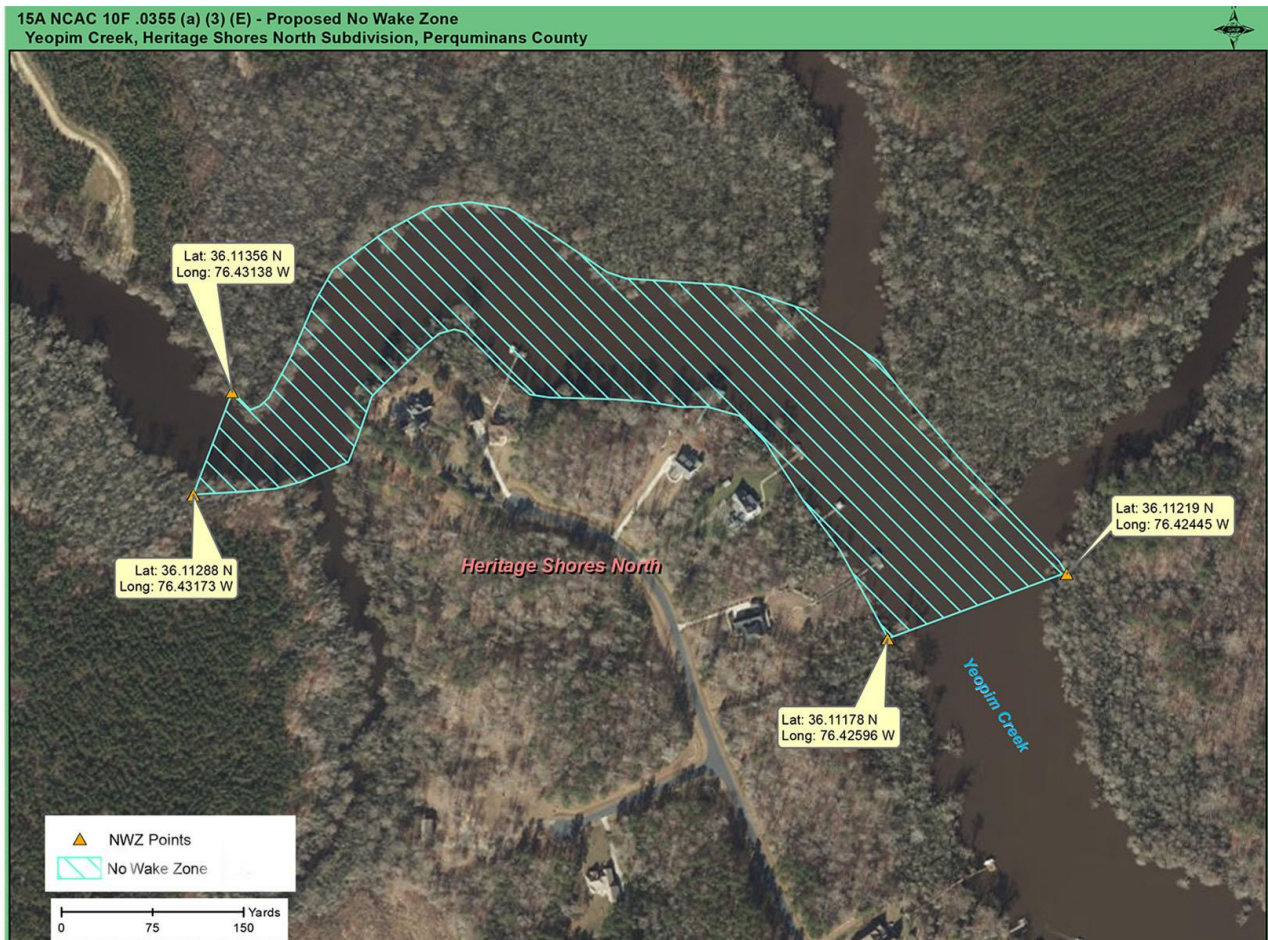
**Re: New “No-Wake Zone” on the Yeopim Creek**

The North Carolina Wildlife Commission has approved a new “NO-Wake Zone” On the Yeopim Creek effective June 1, 2017. The “no-wake zone” restricts high speed boat operation in the following area in the Yeopim Creek to enhance safety:

**From- Lat: 36.11178 N    Long: 76.42596 W**

**To- Lat 36.11356 N    Long: 76:43138 W**

The picture below provides an aerial view of the restricted portion of the Yeopim Creek. No Wake Markers have been placed in the speed restricted portion of the creek to assist all mariners utilizing the area.





©Ed Sanford



©Ed Sanford